

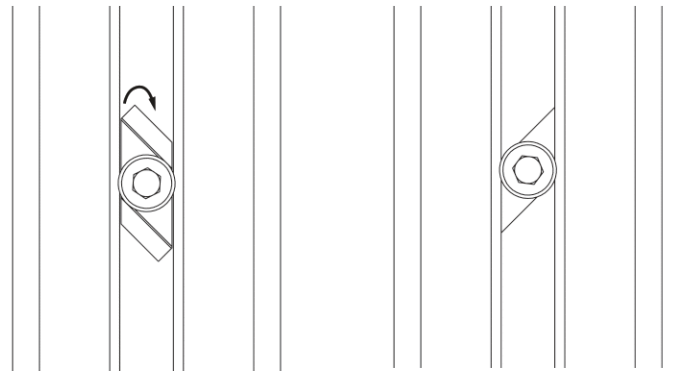
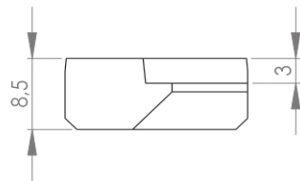
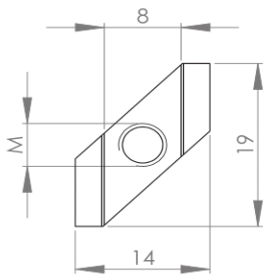


RHOMBUS NUT 8

Fastening elements for straightforward mounting of components in profile slots.

Locking the nut in the slot creates a fixed threaded element. The rhombus nut is automatically locked in the slot when the screw is tightened.

If necessary, the rhombus nuts can be pre-assembled with the screw on the component being attached and inserted at any point in the profile slot.



Positioning the rhombus nut by turning it clockwise

Description	Slot	M (mm)	Material	Weight (g)	ESD	Art. no.:
Rhombus nut 8	8	M3	Die-cast zinc	-	-	357001
	8	M4	Die-cast zinc	-	-	357005
	8	M5	Die-cast zinc	-	-	357010
	8	M6	Die-cast zinc	-	-	357020