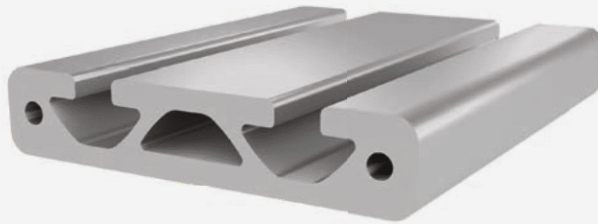




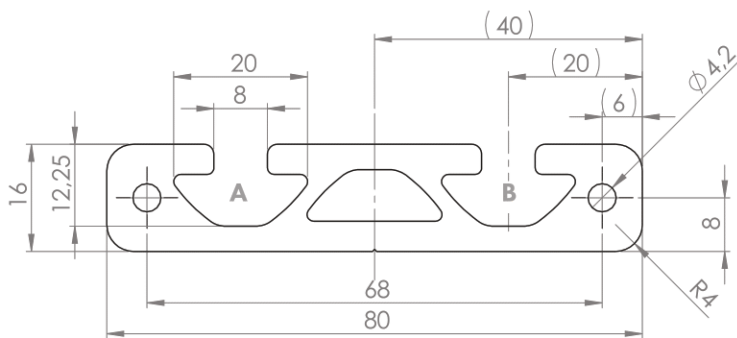
## PROFILE 8 80x16

Material: anodised aluminium



### Technical data:

Surface A [cm <sup>2</sup> ]	8.13
Moment of inertia I <sub>x</sub> [cm <sup>4</sup> ]	2.15
Moment of inertia I <sub>y</sub> [cm <sup>4</sup> ]	50.76
Section modulus W <sub>x</sub> [cm <sup>3</sup> ]	2.69
Section modulus W <sub>y</sub> [cm <sup>3</sup> ]	12.69
Weight m [kg/m]	2.20



Standard processing:	Art. no.:
M5 / -	103170
M5 / M5	103171
M5= / -	103172
M5= / M5=	103175
D7 / -	102350
D7 / D7	102351
D7= / -	102354
D7= / D7=	102355

Explanations and further processing options can be found on p. 223-231

Dimensions (version)	Length (mm)	Slot	Weight (kg)	Art. no.:
80x16	Cut to length	8	2.0 kg/m	20208800
80x16	3060	8	2.0 kg/m	20208803
80x16	6060	8	2.0 kg/m	20208801

If this profile is cut to length, the cutting costs incurred per saw cut must be factored in. (Art. no.: 101020)

## COVER CAP 8 80x16

Material: PA plastic



Dimensions (version)	Slot	Weight (g)	Version	Art. no.:
80x16	8	10	Black	421016