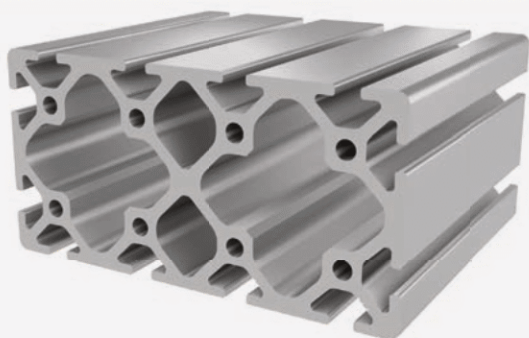




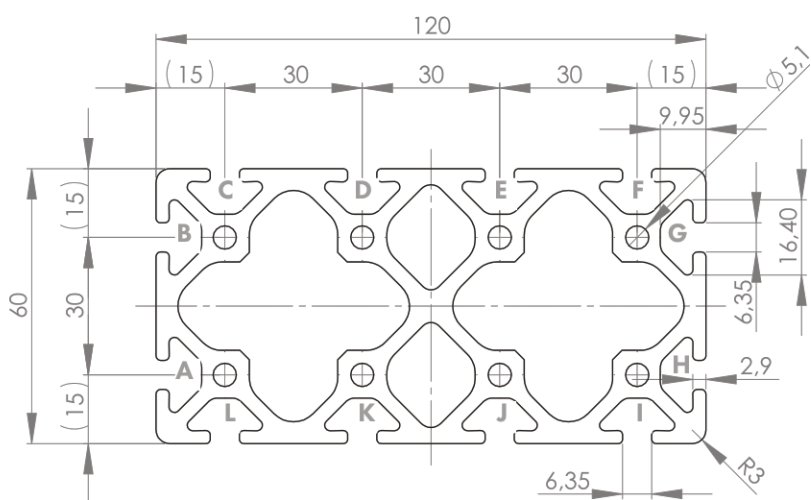
PROFILE 6 60x120

Material: anodised aluminium



Technical data:

Surface A [cm ²]	-
Moment of inertia I _x [cm ⁴]	-
Moment of inertia I _y [cm ⁴]	-
Section modulus W _x [cm ³]	-
Section modulus W _y [cm ³]	-
Weight m [kg/m]	-



Standard processing:	Art. no.:
M6# / -	103159
M6# / M6#	103153
D5.8= / -	102092
D5.8= / D5.8=	102098
D5.8=+ / -	102103
D5.8=+ / D5.8=+	102088
D16=(Uni) / -	1020403
D16=(Uni) / D16=(Uni)	1020406
D16#(Uni) / -	1020403
D16#(Uni) / D16#(uni)	1020407

Explanations and further processing options can be found on p. 223-231

Dimensions (version)	Length (mm)	Slot	Weight (kg)	Art. no.:
60x120	Cut to length	6	6.71 kg/m	20205900
60x120	6060	6	6.71 kg/m	20205901

If this profile is cut to length, the cutting costs incurred per saw cut must be factored in. (Art. no.: 101030)

COVER CAP 6 60x120

Material: PA plastic



Dimensions (version)	Slot	Weight (g)	Version	Art. no.:
60x120	6	2.2	Black	421037