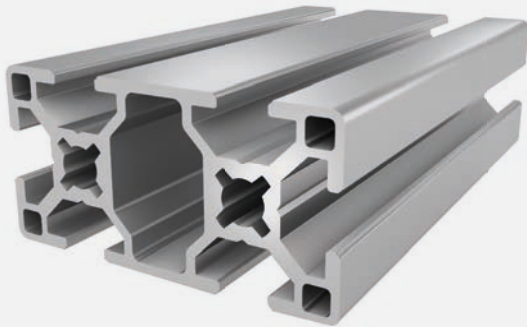




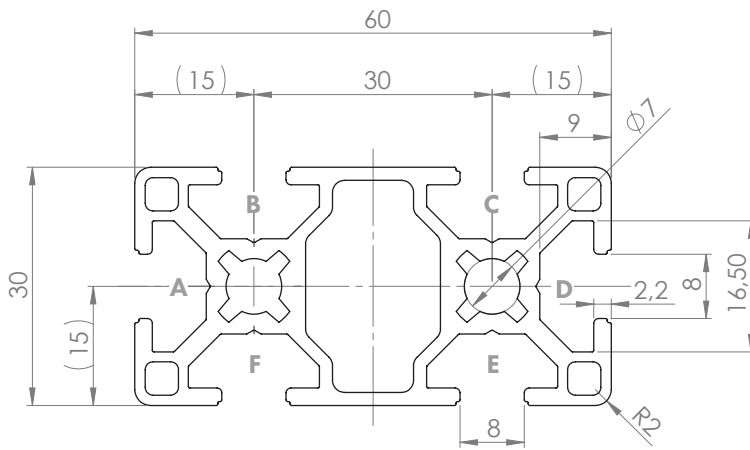
PROFILE 30x60 SLOT 8

Material: anodised aluminium



Technical data:

Surface A [cm ²]	5.60
Moment of inertia I _x [cm ⁴]	19.70
Moment of inertia I _y [cm ⁴]	5.10
Section modulus W _x [cm ³]	7.00
Section modulus W _y [cm ³]	3.90
Weight m [kg/m]	1.50



Standard processing:	Art. no.:
M8= / -	103215
M8= / M8=	103210
D7.8= / -	102120
D7.8= / D7.8=	102130
D7.8= / D7.8V	102135
D7.8=+ / -	102137
D7.8=+ / D7.8=+	102140
D11= / -	102410
D11= / D11=	102415
D11=(SSV) / -	102376
D11=(SSV) / D11=(SSV)	102378

Explanations and further processing options can be found on p. 223-231

Dimensions (version)	Length (mm)	Slot	Weight (kg)	Art. no.:
30x60	Cut to length	8	1.5 kg/m	20101100
30x60	3060	8	1.5 kg/m	20101103
30x60	6060	8	1.5 kg/m	20101101

If this profile is cut to length, the cutting costs incurred per saw cut must be factored in. (Art. no.: 101010)

COVER CAP 30x60 SLOT 8

Material: PA plastic



Dimensions (version)	Slot	Weight (g)	Version	Art. no.:
30x60	8	4	Black	401011