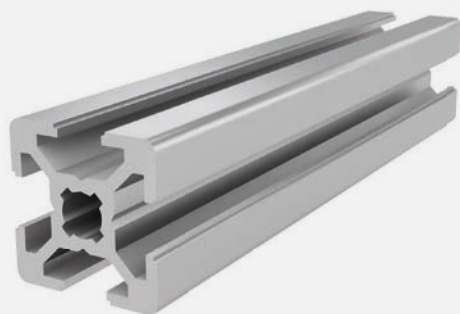




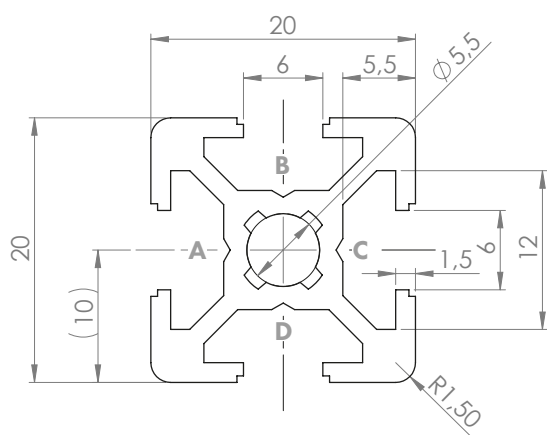
## PROFILE 20x20 SLOT 6

Material: anodised aluminium



### Technical data:

Surface A [cm <sup>2</sup> ]	1.60
Moment of inertia I <sub>x</sub> [cm <sup>4</sup> ]	0.70
Moment of inertia I <sub>y</sub> [cm <sup>4</sup> ]	0.70
Section modulus W <sub>x</sub> [cm <sup>3</sup> ]	0.70
Section modulus W <sub>y</sub> [cm <sup>3</sup> ]	0.70
Weight m [kg/m]	0.44



Standard processing:	Art. no.:
M6 / -	103150
M6 / M6	103151
D5.8 / -	102096
D5.8 / D5.8	102097
D5.8+ /	102095
D5.8+ / D5.8+	102094

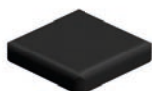
Explanations and further processing options can be found on p. 223-231

Dimensions (version)	Length (mm)	Slot	Weight (kg)	Art. no.:
20x20	Cut to length	6	0.44 kg/m	20100500
20x20	3060	6	0.44 kg/m	20100503
20x20	6060	6	0.44 kg/m	20100501

If this profile is cut to length, the cutting costs incurred per saw cut must be factored in. (Art. no.: 101010)

## COVER CAP 20x20 SLOT 6

Material: PA plastic



Dimensions (version)	Slot	Weight (g)	Version	Art. no.:
20x20	6	4	Black	401004