



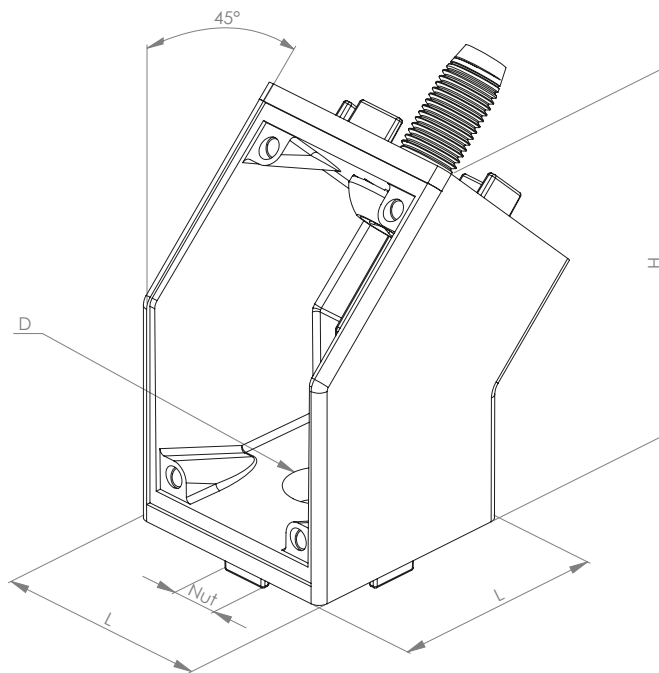
CONNECTOR, 45°



Angle bracket material: die-cast aluminium

For connecting two profiles at a 45° angle (end to end or end to side)

No profile processing is necessary for mounting the items thanks to the self-tapping screws.



Description	Slot	L (mm)	H (mm)	D (mm)	Version	Weight (g)	ESD	Art. no.:
Connector 45° 30x30 set	8/10	30	46.8	8.5	With fastening kit*	160.0		321500
Connector 45° 45x45 set	10	45	82.5	13	With fastening kit**	179.0		321510

Fastening kit:*

- 1 x connector 30x30 - 45°, die-cast aluminium
- 2 x central screws SF8x25 T40, steel, zinc-plated
- 1 x screw, cylinder head, ISO 7380, M6x12, 10.9 steel, zinc-plated
- 1 x screw, cylinder head, ISO 7380, M8x16, 10.9 steel, zinc-plated
- 1 x washer DIN 125 A Ø6.4, steel, zinc-plated
- 1 x hammer nut slot 10 M8, steel, zinc-plated
- 1 x hammer nut slot 8 M6, steel, zinc-plated
- 8 x slot centring pieces, PA plastic (black)
- 1 x cover cap, PA plastic (black)

Fastening kit:**

- 1 x connector 45x45 - 45°, die-cast aluminium
- 2 x central screws SF12x30 T50, steel, zinc-plated
- 1 x T-head bolt M8x20, steel, zinc-plated
- 1 x flanged nut M8 Ø21, steel, zinc-plated
- 1 x cover cap, PA plastic (black), GRP