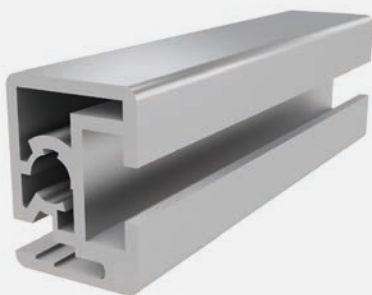




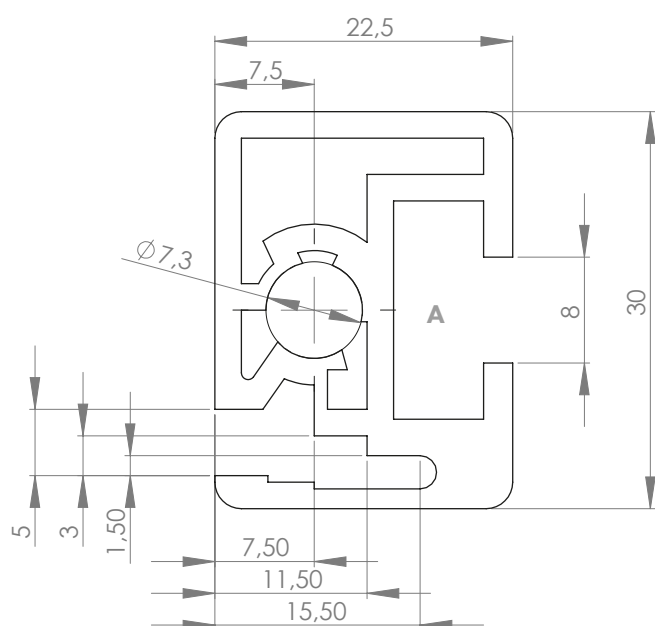
FRAME PROFILE 22.5x30 SLOT 8

Material: anodised aluminium



Technical data:

Surface A [cm ²]	3.20
Moment of inertia I _x [cm ⁴]	1.68
Moment of inertia I _y [cm ⁴]	2.97
Section modulus W _x [cm ³]	1.49
Section modulus W _y [cm ³]	2.97
Weight m [kg/m]	0.81



Standard processing:	Art. no.:
-	-

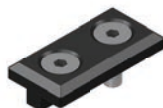
Explanations and further processing options can be found on p. 223-231

Dimensions (version)	Length (mm)	Slot	Weight (kg)	Art. no.:
22.5x30	Cut to length	8	0.81 kg/m	20102600
22.5x30	3060	8	0.81 kg/m	20102603
22.5x30	6060	8	0.81 kg/m	20102601

If this profile is cut to length, the cutting costs incurred per saw cut must be factored in. (Art. no.: 101020)

CORNER PIECE

Material: PA plastic (carbon-fibre reinforced), black



Description	Version	Weight	ESD	Art. no.:
Corner piece 22.5x30	Fastening kit*	-		613050
Fastening kit*				
1x self-tapping countersunk screw S8 x 25		1x countersunk screw DIN 7991 - M8 x 16		1x square nut DIN 562 - M8