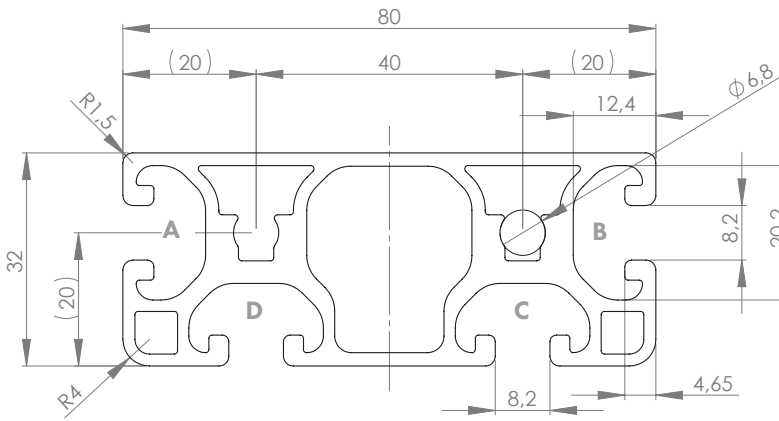


### PROFILE 8 80x32L (light)

Material: anodised aluminium

#### Technical data:

Surface A [cm <sup>2</sup> ]	8.63
Moment of inertia I <sub>x</sub> [cm <sup>4</sup> ]	9.44
Moment of inertia I <sub>y</sub> [cm <sup>4</sup> ]	53.14
Section modulus W <sub>x</sub> [cm <sup>3</sup> ]	5.90
Section modulus W <sub>y</sub> [cm <sup>3</sup> ]	13.29
Weight m [kg/m]	2.33



Standard processing:	Art. no.:
M8= / -	103215
M8= / M8=	103210

Explanations and further processing options can be found on p. 223-231

Dimensions (version)	Length (mm)	Slot	Weight (kg)	Art. no.:
80x32L	Cut to length	8	2.33 kg/m	20208700
80x32L	6060	8	2.33 kg/m	20208701

If this profile is cut to length, the cutting costs incurred per saw cut must be factored in. (Art. no.: 101020)

### COVER CAP

Material: PA plastic

Dimensions (version)	Slot	Weight (g)	Version	Art. no.:
-	-	-	-	-