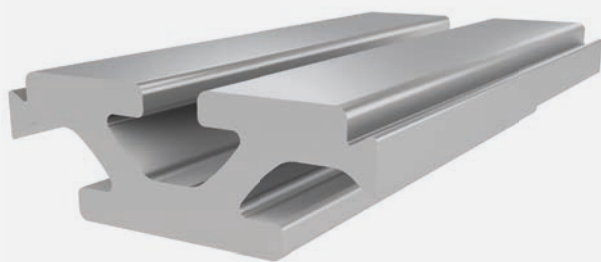




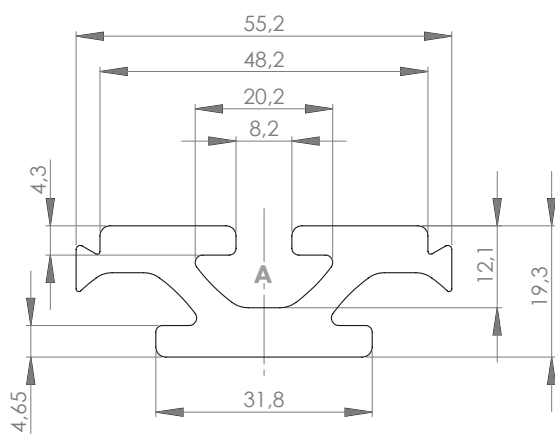
## PROFILE 8 55x20

Material: anodised aluminium



### Technical data:

Surface A [cm <sup>2</sup> ]	5.49
Moment of inertia I <sub>x</sub> [cm <sup>4</sup> ]	2.02
Moment of inertia I <sub>y</sub> [cm <sup>4</sup> ]	10.79
Section modulus W <sub>x</sub> [cm <sup>3</sup> ]	1.93
Section modulus W <sub>y</sub> [cm <sup>3</sup> ]	3.91
Weight m [kg/m]	1.48



Standard processing:	Art. no.:
-	-

Explanations and further processing options can be found on p. 223-231

Dimensions (version)	Length (mm)	Slot	Weight (kg)	Art. no.:
55x20	Cut to length	8	1.48 kg/m	20210500
55x20	6060	8	1.48 kg/m	20210501

If this profile is cut to length, the cutting costs incurred per saw cut must be factored in. (Art. no.: 101030)

## COVER CAP

Material: PA plastic

Dimensions (version)	Slot	Weight (g)	Version	Art. no.:
-	-	-	-	-