

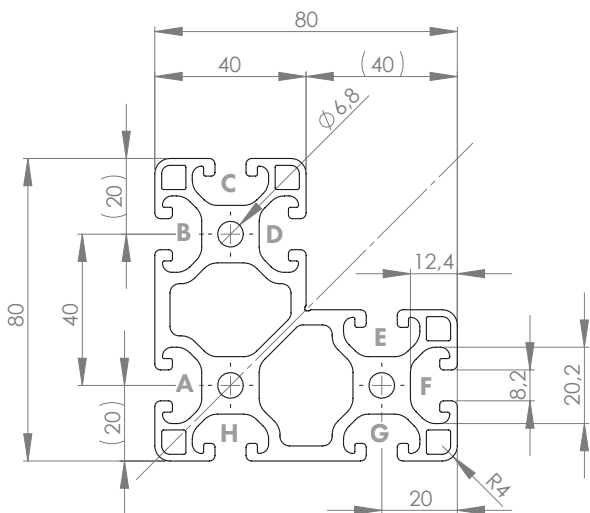


## PROFILE 8 40x80x80L (light)

Material: anodised aluminium

### Technical data:

Surface A [cm <sup>2</sup> ]	17.78
Moment of inertia I <sub>x</sub> [cm <sup>4</sup> ]	96.07
Moment of inertia I <sub>y</sub> [cm <sup>4</sup> ]	96.07
Section modulus W <sub>x</sub> [cm <sup>3</sup> ]	20.69
Section modulus W <sub>y</sub> [cm <sup>3</sup> ]	20.69
Weight m [kg/m]	4.80



Standard processing:	Art. no.:
M8 / -	103200
M8 / M8	103205
M8= / -	103215
M8= / M8=	103210
D14V / -	102470
D14V / D14V	102480

Explanations and further processing options can be found on p. 223-231

Dimensions (version)	Length (mm)	Slot	Weight (kg)	Art. no.:
40x80x80L	Cut to length	8	4.8 kg/m	20210800
40x80x80L	6060	8	4.8 kg/m	20210801

If this profile is cut to length, the cutting costs incurred per saw cut must be factored in. (Art. no.: 101030)

## COVER CAP 8 40x40; 40x80

Material: PA plastic



Dimensions (version)	Slot	Weight (g)	Version	Art. no.:
40x40	8	6	Black	421040
40x40	8	6	Grey (similar to RAL 7042)	99900685
40x80	8	9	Black	421050
40x80	8	12	Screwable (2xM4), black	421051
40x80	8	9.6	Grey (similar to RAL 7042)	99900694