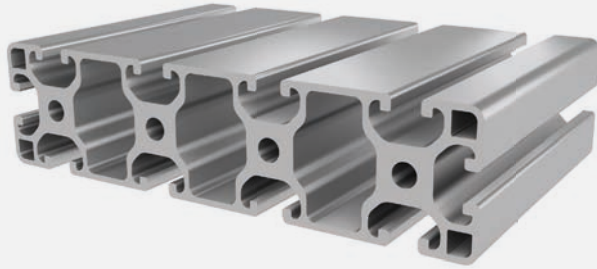




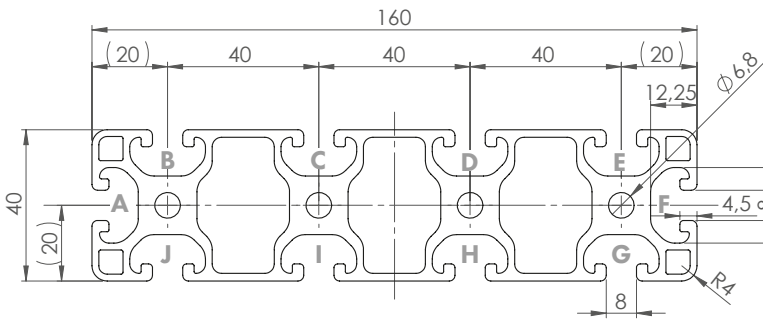
PROFILE 8 40 x 160L (light)
Material: anodised aluminium



Technical data:

| | |
|---|--------|
| Surface A [cm ²] | 20.90 |
| Moment of inertia Ix [cm ⁴] | 31.81 |
| Moment of inertia Iy [cm ⁴] | 500.32 |
| Section modulus Wx [cm ³] | 15.90 |
| Section modulus Wy [cm ³] | 62.54 |
| Weight m [kg/m] | 5.64 |

| Standard processing: | Art. no.: |
|----------------------|-----------|
| M8 / - | 103200 |
| M8 / M8 | 103205 |
| M8= / - | 103215 |
| M8= / M8= | 103210 |
| D7= / - | 102120 |
| D7= / D7= | 102355 |
| D14= / - | 102460 |
| D14= / D14= | 102465 |
| | |
| | |
| | |



Explanations and further processing options can be found on p. 223-231

| Dimensions (version) | Length (mm) | Slot | Weight (kg) | Art. no.: |
|----------------------|---------------|------|-------------|-----------|
| 40x160L | Cut to length | 8 | 5.64 kg/m | 20208500 |
| 40x160L | 6060 | 8 | 5.64 kg/m | 20208501 |

If this profile is cut to length, the cutting costs incurred per saw cut must be factored in. (Art. no.: 101030)

COVER CAP 8 40x160

Material: PA plastic



| Dimensions (version) | Slot | Weight (g) | Version | Art. no.: |
|----------------------|------|------------|---------|-----------|
| 40x160 | 8 | 21 | Black | 421057 |