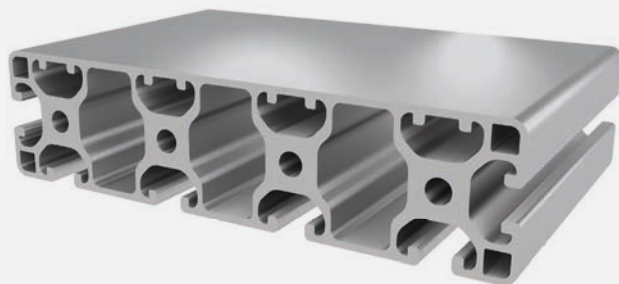




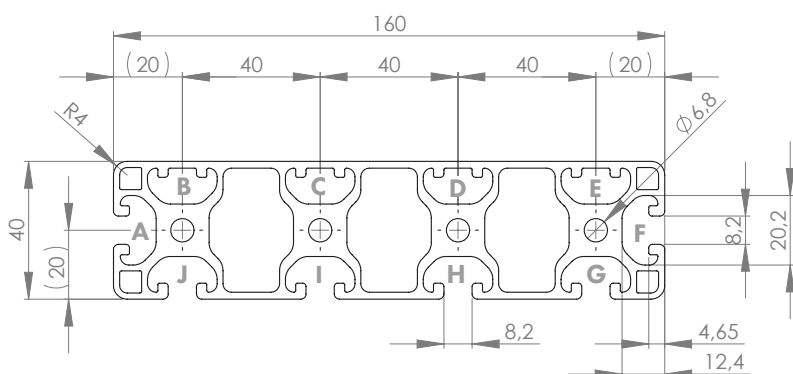
## PROFILE 8 40x160L 4N (light)

Material: anodised aluminium



### Technical data:

Surface A [cm <sup>2</sup> ]	21.67
Moment of inertia I <sub>x</sub> [cm <sup>4</sup> ]	515.93
Moment of inertia I <sub>y</sub> [cm <sup>4</sup> ]	34.89
Section modulus W <sub>x</sub> [cm <sup>3</sup> ]	64.49
Section modulus W <sub>y</sub> [cm <sup>3</sup> ]	16.93
Weight m [kg/m]	5.85



Standard processing:	Art. no.:
M8 / -	103200
M8 / M8	103205
M8= / -	103215
M8= / M8=	103210
D7= / -	102354
D7= / D7=	102355
D14= / -	102460
D14= / D14=	102465
D20V= / -	1020316
D20V= / D20V=	1020308

Explanations and further processing options can be found on p. 223-231

Dimensions (version)	Length (mm)	Slot	Weight (kg)	Art. no.:
40x160L 4N	Cut to length	8	5.64 kg/m	20208540
40x160L 4N	6060	8	5.64 kg/m	20208541

If this profile is cut to length, the cutting costs incurred per saw cut must be factored in. (Art. no.: 101030)

## COVER CAP 8 40x160

Material: PA plastic



Dimensions (version)	Slot	Weight (g)	Version	Art. no.:
40x160	8	21	Black	421057