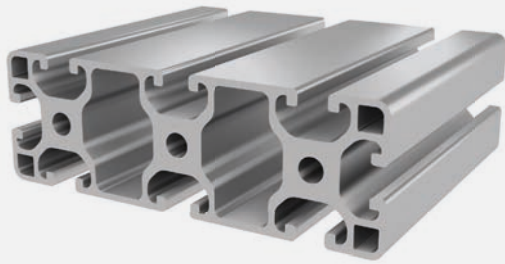


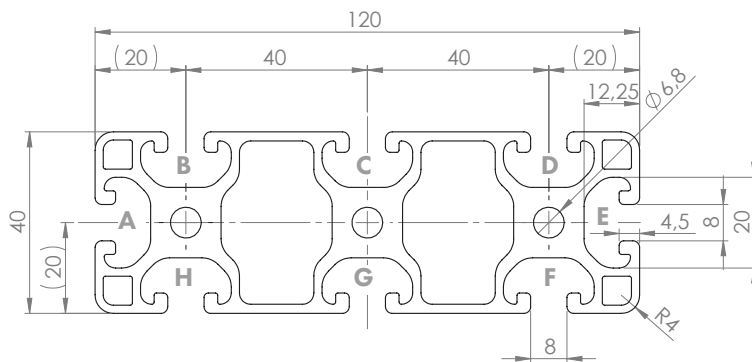
8

PROFILE 8 40 x 120L (light)

Material: anodised aluminium

**Technical data:**

Surface A [cm ²]	16.12
Moment of inertia I _x [cm ⁴]	24.22
Moment of inertia I _y [cm ⁴]	220.54
Section modulus W _x [cm ³]	12.11
Section modulus W _y [cm ³]	36.76
Weight m [kg/m]	4.35



Standard processing:	Art. no.:
M8 / -	103200
M8 / M8	103205
M8= / -	103215
M8= / M8=	103210
D14= / -	102460
D14= / D14=	102465
D20=(Uni) / -	1020314
D20=(Uni) / D20=(Uni)	1020310
D20V=(Uni) / -	1020316
D20V=(Uni) / D20V=(Uni)	1020308

Explanations and further processing options can be found on p. 223-231

Dimensions (version)	Length (mm)	Slot	Weight (kg)	Art. no.:
40x120L	Cut to length	8	4.35 kg/m	20208300
40x120L	6060	8	4.35 kg/m	20208301

If this profile is cut to length, the cutting costs incurred per saw cut must be factored in. (Art. no.: 101030)

COVER CAP 8 40x120

Material: PA plastic



Dimensions (version)	Slot	Weight (g)	Version	Art. no.:
40x120	8	15.2	Black	421055
40x120	8	15.2	Grey (similar to RAL 7042)	99900684