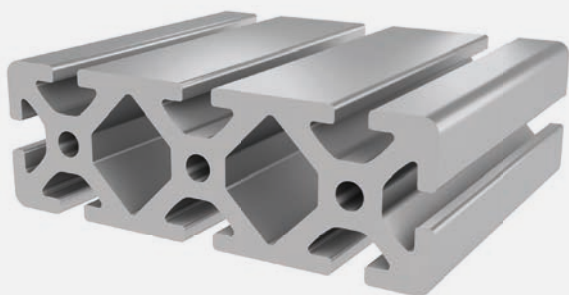




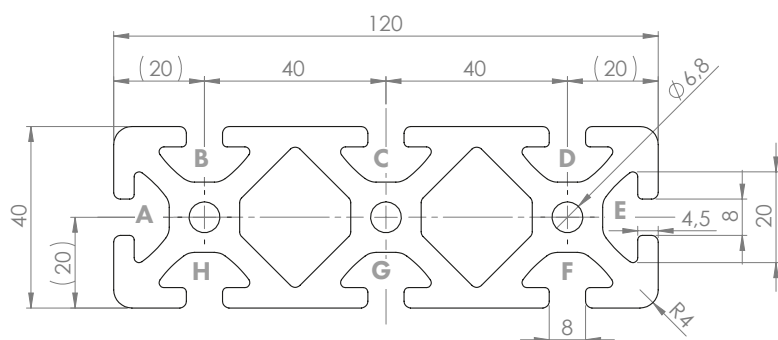
## PROFILE 8 40x120

Material: anodised aluminium



### Technical data:

Surface A [cm <sup>2</sup> ]	24.38
Moment of inertia I <sub>x</sub> [cm <sup>4</sup> ]	39.80
Moment of inertia I <sub>y</sub> [cm <sup>4</sup> ]	322.66
Section modulus W <sub>x</sub> [cm <sup>3</sup> ]	19.90
Section modulus W <sub>y</sub> [cm <sup>3</sup> ]	53.77
Weight m [kg/m]	6.58



Standard processing:	Art. no.:
M8 / -	103200
M8 / M8	103205
M8= / -	103215
M8= / M8=	103210
D14= / -	102460
D14= / D14=	102465
D20=(Uni) / -	1020314
D20=(Uni) / D20=(Uni)	1020310
D20V=(Uni) / -	1020316
D20V=(Uni) / D20V=(Uni)	1020308

Explanations and further processing options can be found on p. 223-231

Dimensions (version)	Length (mm)	Slot	Weight (kg)	Art. no.:
40x120	Cut to length	8	6.58 kg/m	20208400
40x120	6060	8	6.58 kg/m	20208401

If this profile is cut to length, the cutting costs incurred per saw cut must be factored in. (Art. no.: 101030)

## COVER CAP 8 40x120

Material: PA plastic



Dimensions (version)	Slot	Weight (g)	Version	Art. no.:
40x120	8	15.2	Black	421055
40x120	8	15.2	Grey (similar to RAL 7042)	99900684