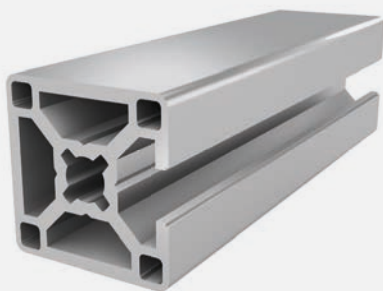




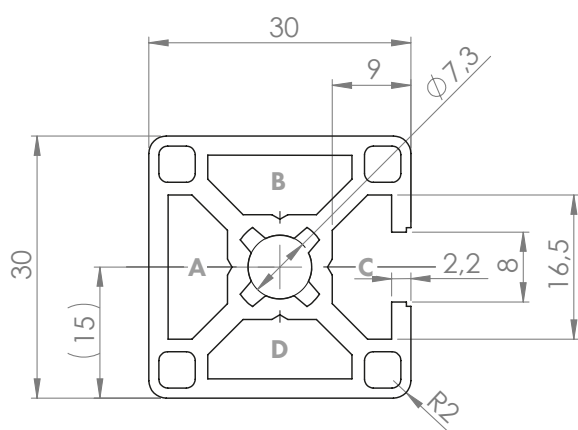
## PROFILE 30x30 1N SLOT 8

Material: anodised aluminium



### Technical data:

Surface A [cm <sup>2</sup> ]	3.69
Moment of inertia I <sub>x</sub> [cm <sup>4</sup> ]	3.12
Moment of inertia I <sub>y</sub> [cm <sup>4</sup> ]	3.49
Section modulus W <sub>x</sub> [cm <sup>3</sup> ]	1.99
Section modulus W <sub>y</sub> [cm <sup>3</sup> ]	2.32
Weight m [kg/m]	1.00



Standard processing:	Art. no.:
M8 / -	103200
M8 / M8	103205
D7.8 / -	102100
D7.8 / D7.8	102102
D7.8 / D7.8V	102110
D7.8+ / -	102115
D7.8+ / D7.8+	102117
D11 (SSV) / -	102370
D11 (SSV) / D11 (SSV)	102372

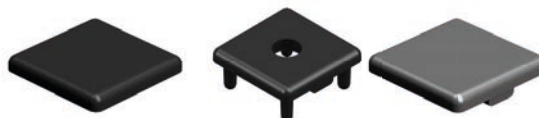
Explanations and further processing options can be found on p. 223-231

Dimensions (version)	Length (mm)	Slot	Weight (kg)	Art. no.:
30x30 1N	Cut to length	8	1 kg/m	20101010
30x30 1N	6060	8	1 kg/m	20101011

If this profile is cut to length, the cutting costs incurred per saw cut must be factored in. (Art. no.: 101010)

## COVER CAP 30x30 SLOT 8, 30x30 WITH HOLE SLOT 8

Material: PA plastic



Dimensions (version)	Slot	Weight (g)	Version	Art. no.:
30x30	8	4	Black	401010
30x30	8	4	With hole ( $\phi 8.5$ ), black	401016
30x30	8	4	Signal grey	401110