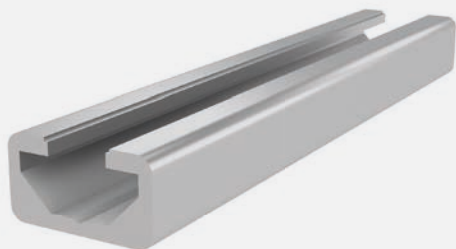




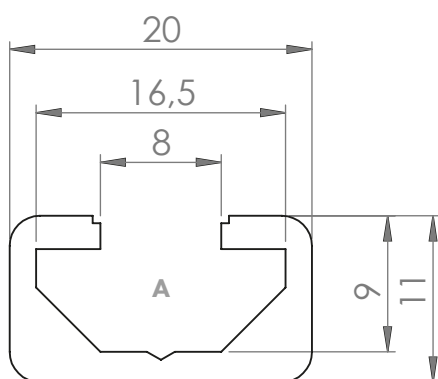
## PROFILE 11x20 SLOT 8

Material: anodised aluminium



### Technical data:

|   |      |
|---|------|
| Surface A [cm <sup>2</sup> ]                        | 1.00 |
| Moment of inertia I <sub>x</sub> [cm <sup>4</sup> ] | 0.50 |
| Moment of inertia I <sub>y</sub> [cm <sup>4</sup> ] | 0.10 |
| Section modulus W <sub>x</sub> [cm <sup>3</sup> ]   | 0.77 |
| Section modulus W <sub>y</sub> [cm <sup>3</sup> ]   | 0.37 |
| Weight m [kg/m]                                     | 0.30 |



| Standard processing: | Art. no.: |
|----------------------|-----------|
| -                    | -         |
|                      |           |
|                      |           |
|                      |           |
|                      |           |
|                      |           |
|                      |           |
|                      |           |
|                      |           |

Explanations and further processing options can be found on p. 223-231

| Dimensions (version) | Length (mm)   | Slot | Weight (kg) | Art. no.: |
|----------------------|---------------|------|-------------|-----------|
| 11x20                | Cut to length | 8    | 0.3 kg/m    | 20100100  |
| 11x20                | 3060          | 8    | 0.3 kg/m    | 20100103  |
| 11x20                | 6060          | 8    | 0.3 kg/m    | 20100101  |

If this profile is cut to length, the cutting costs incurred per saw cut must be factored in. (Art. no.: 101010)

## COVER CAP

Material: PA plastic

| Dimensions (version) | Slot | Weight (g) | Version | Art. no.: |
|----------------------|------|------------|---------|-----------|
| -                    | -    | -          | -       | -         |
|                      |      |            |         |           |
|                      |      |            |         |           |