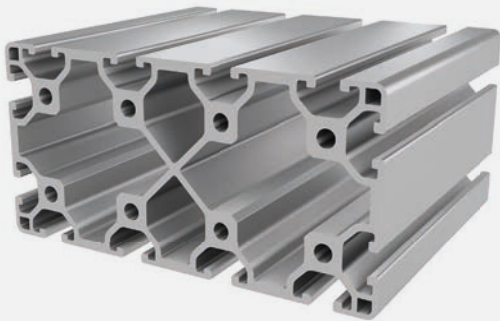


6

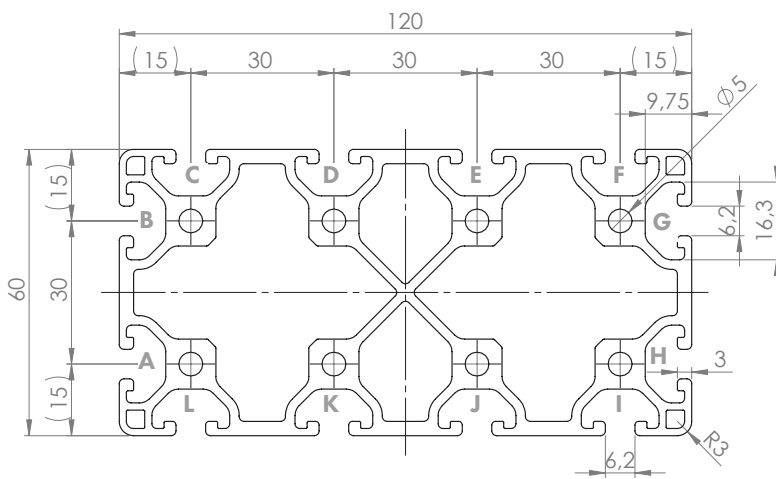


## PROFILE 6 60x120L (light)

Material: anodised aluminium

### Technical data:

Surface A [cm <sup>2</sup> ]	18.78
Moment of inertia I <sub>x</sub> [cm <sup>4</sup> ]	77.39
Moment of inertia I <sub>y</sub> [cm <sup>4</sup> ]	261.87
Section modulus W <sub>x</sub> [cm <sup>3</sup> ]	25.80
Section modulus W <sub>y</sub> [cm <sup>3</sup> ]	43.65
Weight m [kg/m]	5.05



Standard processing:	Art. no.:
M6# / -	103159
M6# / M6#	103153
D5.8= / -	102092
D5.8= / D5.8=	102098
D5.8=+ / -	102103
D5.8=+ / D5.8=+	102088
D16=(Uni) / -	1020403
D16=(Uni) / D16=(Uni)	1020406
D16#(Uni) / -	1020403
D16#(Uni) / D16#(uni)	1020407

Explanations and further processing options can be found on p. 223-231

Dimensions (version)	Length (mm)	Slot	Weight (kg)	Art. no.:
60x120L	Cut to length	6	5.05 kg/m	20205800
60x120L	6060	6	5.05 kg/m	20205801

If this profile is cut to length, the cutting costs incurred per saw cut must be factored in. (Art. no.: 101030)

## COVER CAP 6 60x120

Material: PA plastic



Dimensions (version)	Slot	Weight (g)	Version	Art. no.:
60x120	6	2.2	Black	421037