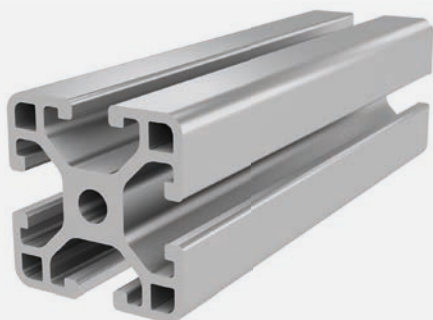




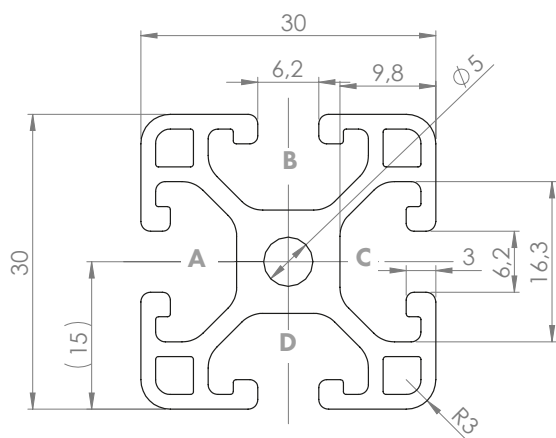
PROFILE 6 30x30L (light)

Material: anodised aluminium



Technical data:

Surface A [cm ²]	3.43
Moment of inertia I _x [cm ⁴]	2.90
Moment of inertia I _y [cm ⁴]	2.90
Section modulus W _x [cm ³]	1.94
Section modulus W _y [cm ³]	1.94
Weight m [kg/m]	0.93



Standard processing:	Art. no.:
M6 / -	103150
M6 / M6	103151
D5.8 / -	102096
D5.8 / D5.8	102097
D5.8 / D5.8V	102093
D5.8+ /	102095
D5.8+ / D5.8+	102094
D16(Uni) / -	1020411
D16(Uni) / D16(Uni)	1020405
D16(Uni) / D16V(Uni)	1020410

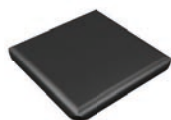
Explanations and further processing options can be found on p. 223-231

Dimensions (version)	Length (mm)	Slot	Weight (kg)	Art. no.:
30x30L	Cut to length	6	0.93 kg/m	20204000
30x30L	3060	6	0.93 kg/m	20204003
30x30L	6060	6	0.93 kg/m	20204001

If this profile is cut to length, the cutting costs incurred per saw cut must be factored in. (Art. no.: 101010)

COVER CAP 6 30x30

Material: PA plastic



Dimensions (version)	Slot	Weight (g)	Version	Art. no.:
30x30	6	2.6	Black	421030