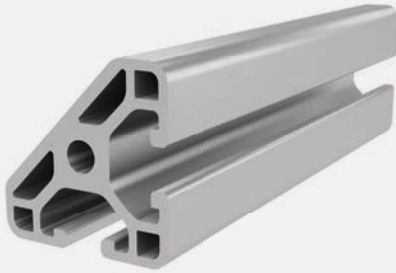




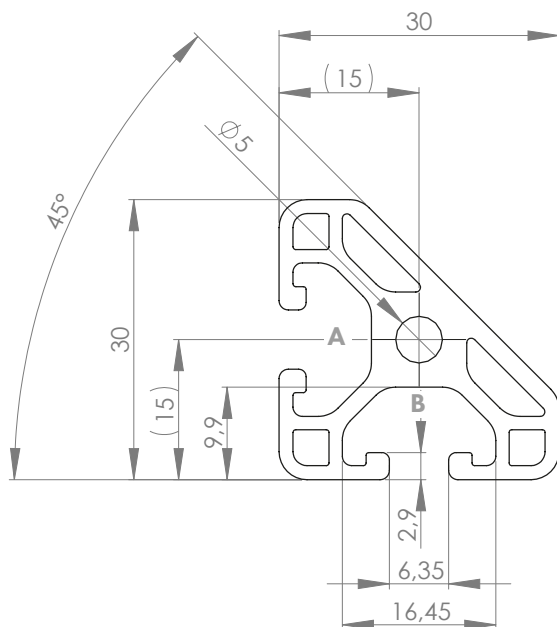
## PROFILE 6 30x30L 45° (light)

Material: anodised aluminium



### Technical data:

Surface A [cm <sup>2</sup> ]	3.05
Moment of inertia I <sub>x</sub> [cm <sup>4</sup> ]	2.20
Moment of inertia I <sub>y</sub> [cm <sup>4</sup> ]	2.20
Section modulus W <sub>x</sub> [cm <sup>3</sup> ]	1.32
Section modulus W <sub>y</sub> [cm <sup>3</sup> ]	1.32
Weight m [kg/m]	0.82



Standard processing:	Art. no.:
M6 / -	103150
M6 / M6	103151
D16(Uni) / -	1020411
D16(Uni) / D16(Uni)	1020405

Explanations and further processing options can be found on p. 223-231

Dimensions (version)	Length (mm)	Slot	Weight (kg)	Art. no.:
30x30L 45°	Cut to length	6	0.82 kg/m	20204380
30x30L 45°	3060	6	0.82 kg/m	20204381

If this profile is cut to length, the cutting costs incurred per saw cut must be factored in. (Art. no.: 101010)

## COVER CAP

Dimensions (version)	Slot	Weight (g)	Version	Art. no.:
-	-	-	-	-