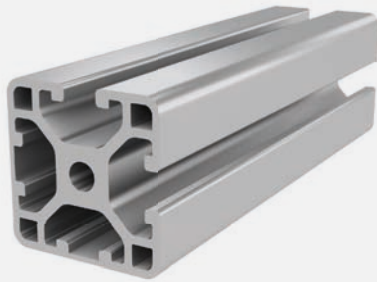


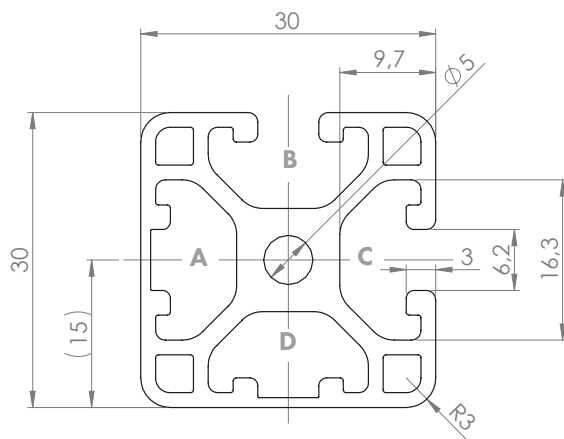
6

**PROFILE 6 30x30L 2N90 (light)**

Material: anodised aluminium

**Technical data:**

Surface A [cm <sup>2</sup> ]	3.54
Moment of inertia I <sub>x</sub> [cm <sup>4</sup> ]	3.02
Moment of inertia I <sub>y</sub> [cm <sup>4</sup> ]	3.02
Section modulus W <sub>x</sub> [cm <sup>3</sup> ]	1.98
Section modulus W <sub>y</sub> [cm <sup>3</sup> ]	1.98
Weight m [kg/m]	0.96



Standard processing:	Art. no.:
M6 / -	103150
M6 / M6	103151
D5.8 / -	102096
D5.8 / D5.8	102097
D5.8 / D5.8V	102093
D5.8+ /	102095
D5.8+ / D5.8+	102094
D16(Uni) / -	1020411
D16(Uni) / D16(Uni)	1020405
D16(Uni) / D16V(Uni)	1020410

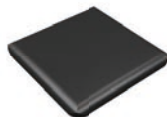
Explanations and further processing options can be found on p. 223-231

Dimensions (version)	Length (mm)	Slot	Weight (kg)	Art. no.:
30x30L 2N90	Cut to length	6	0.96 kg/m	20204020
30x30L 2N90	6060	6	0.96 kg/m	20204021

If this profile is cut to length, the cutting costs incurred per saw cut must be factored in. (Art. no.: 101010)

**COVER CAP 6 30x30**

Material: PA plastic



Dimensions (version)	Slot	Weight (g)	Version	Art. no.:
30x30	6	2.6	Black	421030