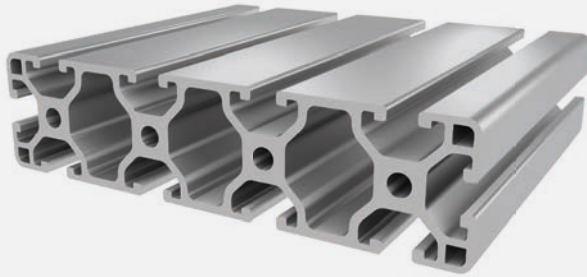


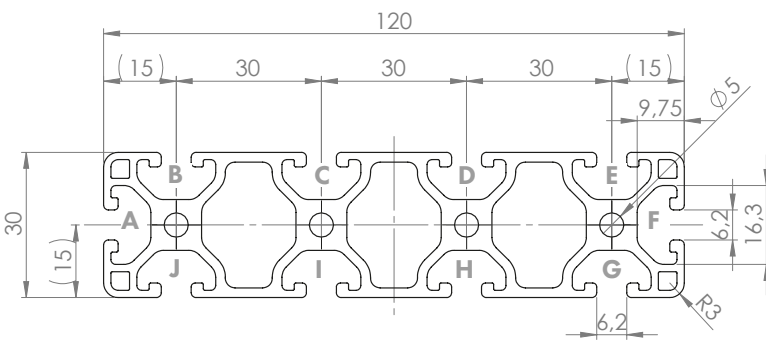
6

PROFILE 6 30x120L (light)

Material: anodised aluminium

**Technical data:**

Surface A [cm ²]	11.65
Moment of inertia I _x [cm ⁴]	11.04
Moment of inertia I _y [cm ⁴]	154.51
Section modulus W _x [cm ³]	7.21
Section modulus W _y [cm ³]	25.44
Weight m [kg/m]	3.11



Standard processing:	Art. no.:
M6= / -	103161
M6= / M6=	103152
D5.8= / -	102092
D5.8= / D5.8=	102098
D5.8=+ / -	102103
D5.8=+ / D5.8=+	102088
D16=(Uni) / -	1020403
D16=(Uni) / D16=(Uni)	1020406
D16#(Uni) / -	1020403
D16#(Uni) / D16#(uni)	1020407

Explanations and further processing options can be found on p. 223-231

Dimensions (version)	Length (mm)	Slot	Weight (kg)	Art. no.:
30x120L	Cut to length	6	3.11 kg/m	20205700
30x120L	6060	6	3.11 kg/m	20205701

If this profile is cut to length, the cutting costs incurred per saw cut must be factored in. (Art. no.: 101020)

COVER CAP 6 30x120

Material: PA plastic



Dimensions (version)	Slot	Weight (g)	Version	Art. no.:
30x120	6	11	Black	421036