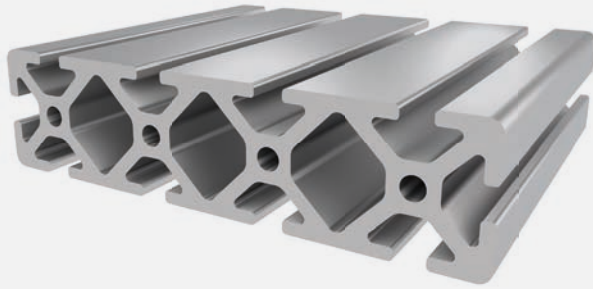




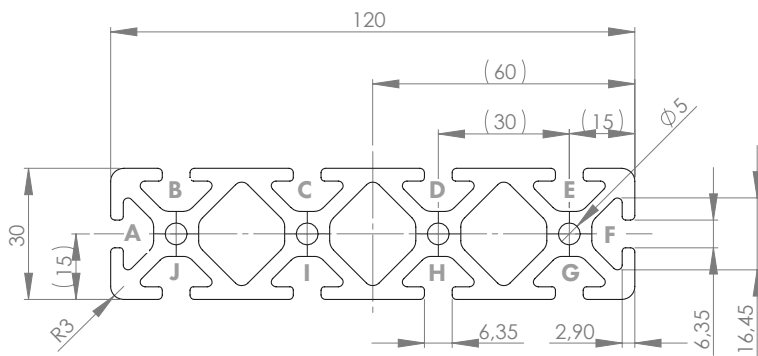
## PROFILE 6 30x120

Material: anodised aluminium



### Technical data:

Surface A [cm <sup>2</sup> ]	15.73
Moment of inertia I <sub>x</sub> [cm <sup>4</sup> ]	207.28
Moment of inertia I <sub>y</sub> [cm <sup>4</sup> ]	15.31
Section modulus W <sub>x</sub> [cm <sup>3</sup> ]	34.55
Section modulus W <sub>y</sub> [cm <sup>3</sup> ]	10.20
Weight m [kg/m]	4.25



Standard processing:	Art. no.:
M6= /-	103161
M6= / M6=	103152
D5.8= / -	102092
D5.8= / D5.8=	102098
D16=(Uni) / -	1020403
D16=(Uni) / D16=(Uni)	1020406

Explanations and further processing options can be found on p. 223-231

Dimensions (version)	Length (mm)	Slot	Weight (kg)	Art. no.:
30x120	Cut to length	6	3.11 kg/m	20205100
30x120	6060	6	3.11 kg/m	20205101

If this profile is cut to length, the cutting costs incurred per saw cut must be factored in. (Art. no.: 101020)

## COVER CAP 6 30x120

Material: PA plastic



Dimensions (version)	Slot	Weight (g)	Version	Art. no.:
30x120	6	11	Black	421036