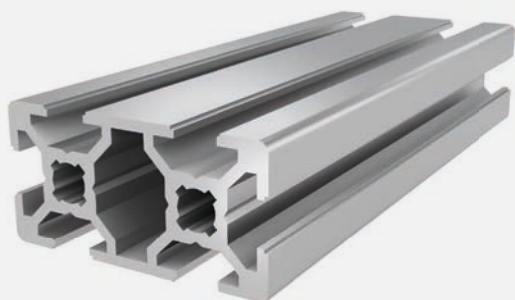




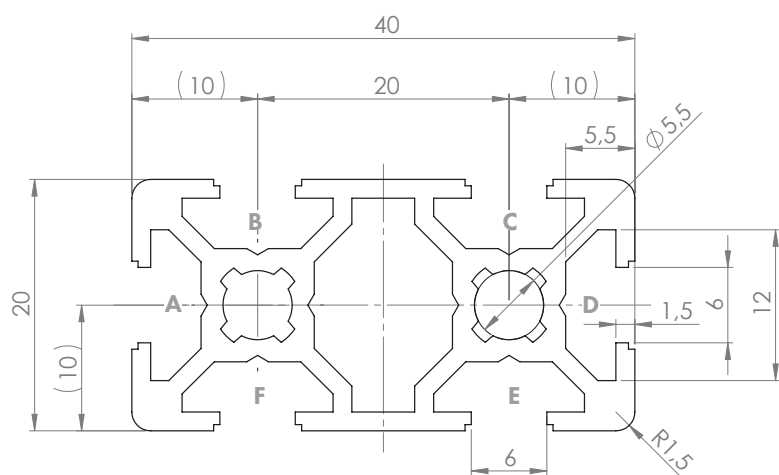
PROFILE 20x40 SLOT 6

Material: anodised aluminium



Technical data:

Surface A [cm ²]	2.90
Moment of inertia I _x [cm ⁴]	4.60
Moment of inertia I _y [cm ⁴]	1.20
Section modulus W _x [cm ³]	2.50
Section modulus W _y [cm ³]	1.40
Weight m [kg/m]	0.80



Standard processing:	Art. no.:
M6= / -	103161
M6= / M6=	103152
D5.8= / -	102092
D5.8= / D5.8=	102098
D5.8V / -	102101
D5.8V / D5.8V	102102

Explanations and further processing options can be found on p. 223-231

Dimensions (version)	Length (mm)	Slot	Weight (kg)	Art. no.:
20x40	Cut to length	6	0.8 kg/m	20100600
20x40	6060	6	0.8 kg/m	20100601

If this profile is cut to length, the cutting costs incurred per saw cut must be factored in. (Art. no.: 101010)

COVER CAP 20x20

Material: PA plastic

Dimensions (version)	Slot	Weight (g)	Version	Art. no.:
20x20 (2x)	6	4	Black	401004