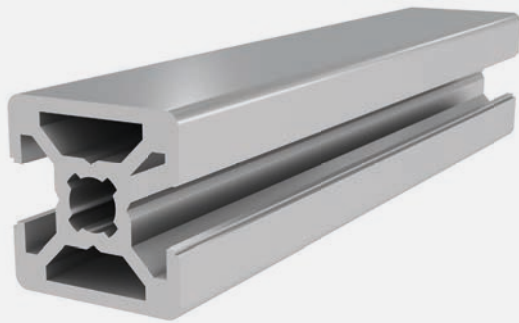




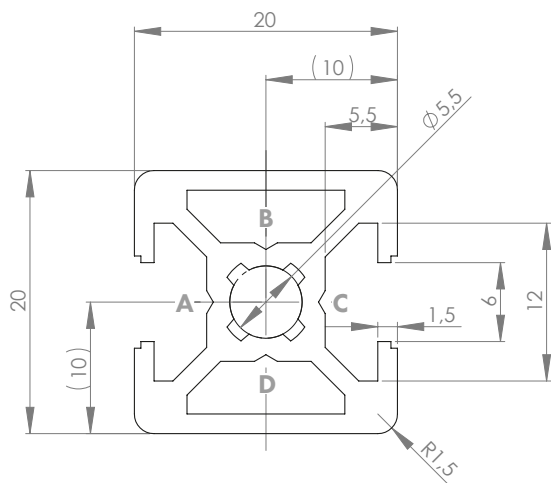
PROFILE 20x20 2N180 SLOT 6

Material: anodised aluminium



Technical data:

Surface A [cm ²]	1.83
Moment of inertia I _x [cm ⁴]	0.68
Moment of inertia I _y [cm ⁴]	0.84
Section modulus W _x [cm ³]	0.68
Section modulus W _y [cm ³]	0.84
Weight m [kg/m]	0.49



Standard processing:	Art. no.:
M6 / -	103150
M6 / M6	103151
D5.8 / -	102096
D5.8 / D5.8	102097
D5.8+ /	102095
D5.8+ / D5.8+	102094

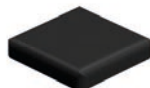
Explanations and further processing options can be found on p. 223-231

Dimensions (version)	Length (mm)	Slot	Weight (kg)	Art. no.:
20x20 2N180	Cut to length	6	0.49 kg/m	20100540
20x20 2N180	6060	6	0.49 kg/m	20100541

If this profile is cut to length, the cutting costs incurred per saw cut must be factored in. (Art. no.: 101010)

COVER CAP 20x20 SLOT 6

Material: PA plastic



Dimensions (version)	Slot	Weight (g)	Version	Art. no.:
20x20	6	4	Black	401004