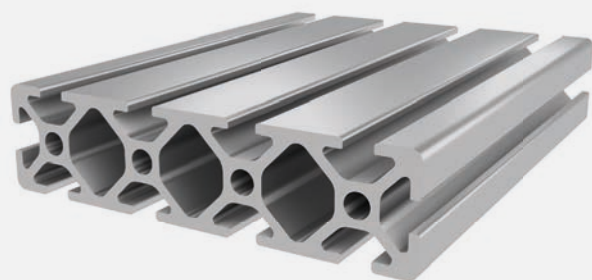




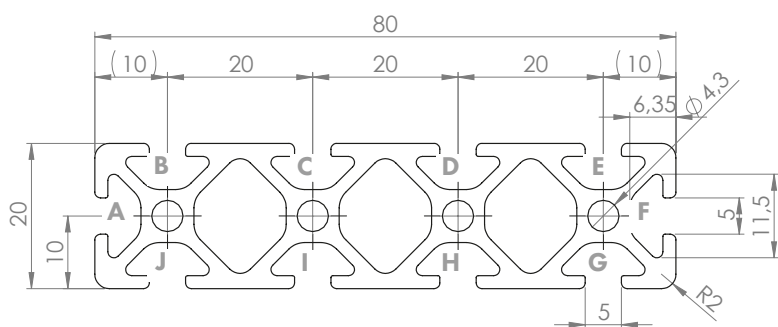
## PROFILE 5 20x80

Material: anodised aluminium



### Technical data:

Surface A [cm <sup>2</sup> ]	6.25
Moment of inertia I <sub>x</sub> [cm <sup>4</sup> ]	2.76
Moment of inertia I <sub>y</sub> [cm <sup>4</sup> ]	36.88
Section modulus W <sub>x</sub> [cm <sup>3</sup> ]	2.76
Section modulus W <sub>y</sub> [cm <sup>3</sup> ]	9.02
Weight m [kg/m]	1.67



Standard processing:	Art. no.:
M5= / -	103175
M5= / M5=	103172
D4.5= / -	102177
D4.5= / D4.5=	102180
D4.5= / D4.5V	102181
D4.5V / -	102171
D4.5V / D4.5V	102176

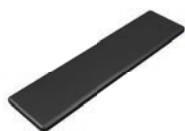
Explanations and further processing options can be found on p. 223-231

Dimensions (version)	Length (mm)	Slot	Weight (kg)	Art. no.:
20x80	Cut to length	5	1.67 kg/m	20203400
20x80	3060	5	1.67 kg/m	20203403
20x80	6060	5	1.67 kg/m	20203401

If this profile is cut to length, the cutting costs incurred per saw cut must be factored in. (Art. no.: 101010)

## COVER CAP 5 20x80

Material: PA plastic



Dimensions (version)	Slot	Weight (g)	Version	Art. no.:
20x80	5	5	Black	421027