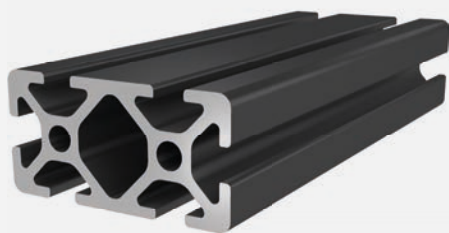




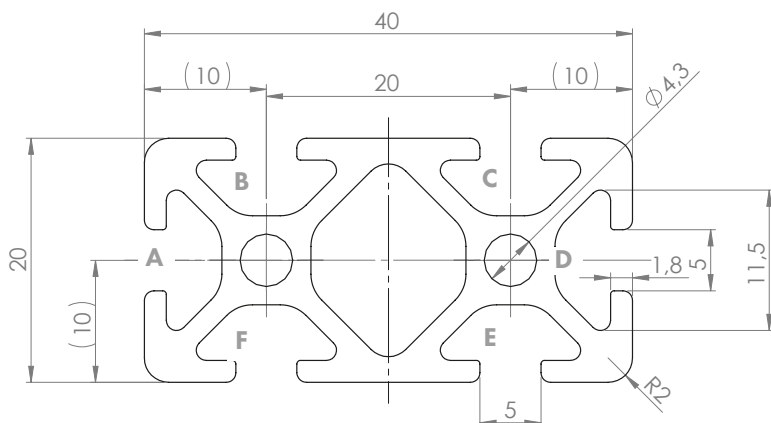
PROFILE 5 20x40 (black)

Material: anodised aluminium



Technical data:

Surface A [cm ²]	3.32
Moment of inertia I _x [cm ⁴]	1.41
Moment of inertia I _y [cm ⁴]	5.14
Section modulus W _x [cm ³]	1.41
Section modulus W _y [cm ³]	2.57
Weight m [kg/m]	0.89



Standard processing:	Art. no.:
M5= / -	103175
M5= / M5=	103172
D4.5= / -	102177
D4.5= / D4.5=	102180
D4.5= / D4.5V	102181
D4.5V / -	102171
D4.5V / D4.5V	102176
D12=(Uni) / -	102439
D12=(Uni) / D12=(Uni)	102442

Explanations and further processing options can be found on p. 223-231

Dimensions (version)	Length (mm)	Slot	Weight (kg)	Art. no.:
20x40	Cut to length	5	0.89 kg/m	20203005
20x40	3060	5	0.89 kg/m	20203007
20x40	6060	5	0.89 kg/m	20203006

If this profile is cut to length, the cutting costs incurred per saw cut must be factored in. (Art. no.: 101010)

COVER CAP 5 20x40

Material: PA plastic



Dimensions (version)	Slot	t (mm)	Weight (g)	Version	Art. no.:
20x40	5	4	2.2	Black	421020
20x40	5	2.5	2.2	Black	421021