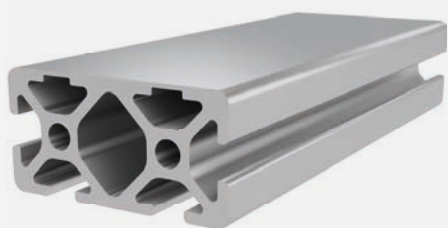




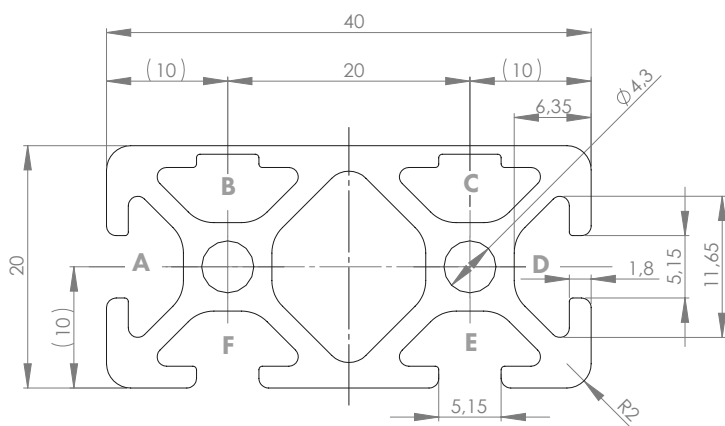
PROFILE 5 20x40 2N

Material: anodised aluminium



Technical data:

Surface A [cm ²]	5.20
Moment of inertia I _x [cm ⁴]	1.48
Moment of inertia I _y [cm ⁴]	2.60
Section modulus W _x [cm ³]	1.44
Section modulus W _y [cm ³]	0.91
Weight m [kg/m]	3.37



Standard processing:	Art. no.:
M5 / -	103170
M5 / M5	103171
M5= / -	103175
M5= / M5=	103172
D4.5= / -	102177
D4.5= / D4.5=	102180
D4.5= / D4.5V	102181
D4.5V / -	102171
D4.5V / D4.5V	102176

Explanations and further processing options can be found on p. 223-231

Dimensions (version)	Length (mm)	Slot	Weight (kg)	Art. no.:
20x40 2N	Cut to length	5	0.91 kg/m	20203050
20x40 2N	6060	5	0.91 kg/m	20203051

If this profile is cut to length, the cutting costs incurred per saw cut must be factored in. (Art. no.: 101010)

COVER CAP 5 20x40

Material: PA plastic



Dimensions (version)	Slot	t (mm)	Weight (g)	Version	Art. no.:
20x40	5	4	2.2	Black	421020
20x40	5	2.5	2.2	Black	421021