



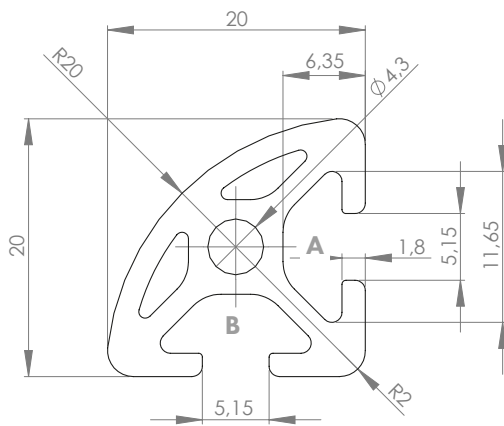
PROFILE 5 R20-90°

Material: anodised aluminium



Technical data:

Surface A [cm ²]	1.71
Moment of inertia I _x [cm ⁴]	0.58
Moment of inertia I _y [cm ⁴]	0.58
Section modulus W _x [cm ³]	0.53
Section modulus W _y [cm ³]	0.53
Weight m [kg/m]	0.46



Standard processing:	Art. no.:
M5 / -	103170
M5 / M5	103171
D12(Uni) / -	102440
D12(Uni) / D12(Uni)	102441

Explanations and further processing options can be found on p. 223-231

Dimensions (version)	Length (mm)	Slot	Weight (kg)	Art. no.:
R20-90°	Cut to length	5	0.46 kg/m	20201100
R20-90°	3060	5	0.46 kg/m	20201103

If this profile is cut to length, the cutting costs incurred per saw cut must be factored in. (Art. no.: 101010)

COVER CAP

Dimensions (version)	Slot	Weight (g)	Version	Art. no.:
-	-	-	-	-