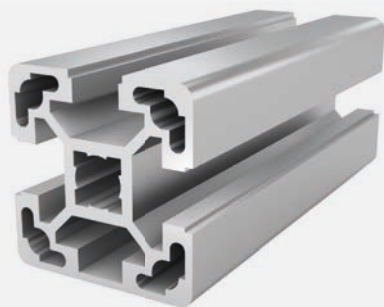




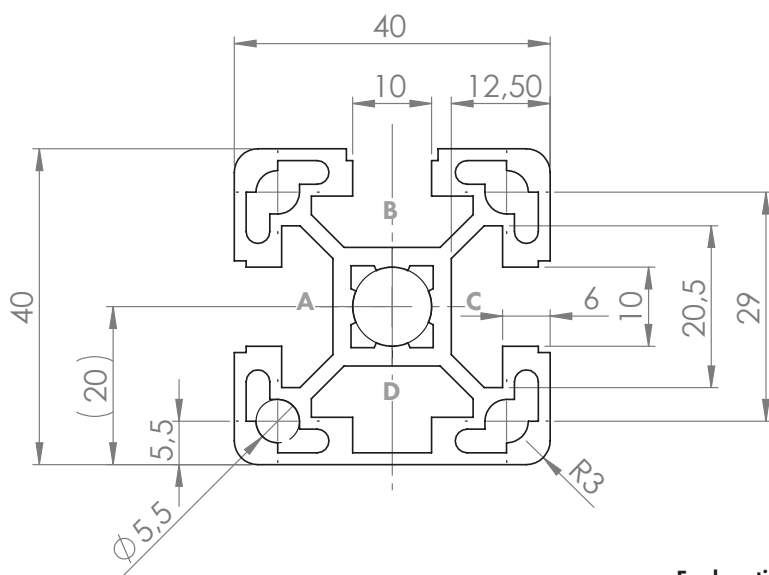
## PROFILE 40x40L 3N SLOT 10 (light)

Material: anodised aluminium



### Technical data:

Surface A [cm <sup>2</sup> ]	5.79
Moment of inertia I <sub>x</sub> [cm <sup>4</sup> ]	9.69
Moment of inertia I <sub>y</sub> [cm <sup>4</sup> ]	9.08
Section modulus W <sub>x</sub> [cm <sup>3</sup> ]	4.71
Section modulus W <sub>y</sub> [cm <sup>3</sup> ]	4.54
Weight m [kg/m]	1.56



Standard processing:	Art. no.:
M12 / -	103300
M12 / M12	103305
D17 / -	102500
D17 / D17	102505
D17(SSV) / -	102380
D17(SSV) / D17(SSV)	102382
D17(SSV) / D17V(SSV)	102384
D9.8 / -	102300
D9.8 / D9.8	102305
D9.8+ / -	102315
D9.8+ / D9.8+	102325

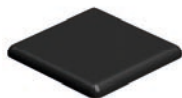
Explanations and further processing options can be found on p. 223-231

Dimensions (version)	Length (mm)	Slot	Weight (kg)	Art. no.:
40x40L 3N	Cut to length	10	1.5 kg/m	20101730
40x40L 3N	3060	10	1.5 kg/m	20101733
40x40L 3N	6060	10	1.5 kg/m	20101731

If this profile is cut to length, the cutting costs incurred per saw cut must be factored in. (Art. no.: 101020)

## COVER CAP 40x40 SLOT 10

Material: PA plastic



Dimensions (version)	Slot	Weight (g)	Version	Art. no.:
40x40	10	6	Black	401015